

PACIFIC ISLANDS STUDY CIRCLE

The Clive Harvey (Tokelau) & Ruth Tyler (Cook Islands) Collections

Closing Date - 17 November 2013.

A few "key" items from this Auction are illustrated however ALL lots are illustrated on the PISC web-site (www.pisc.org.uk) and follow the Auction links.

A golden opportunity for members to obtain some scarce and difficult to find items from these two territories, which includes a good range of aviation and maritime mail items from both territories.

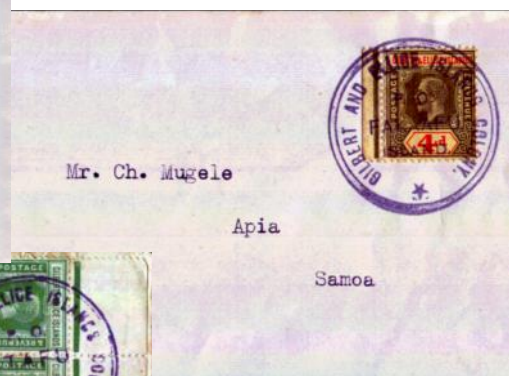
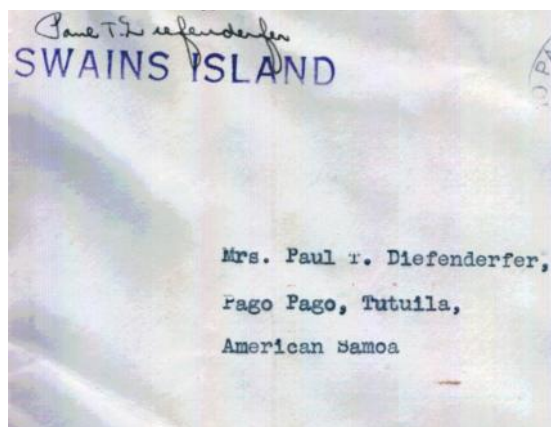


Lot 2

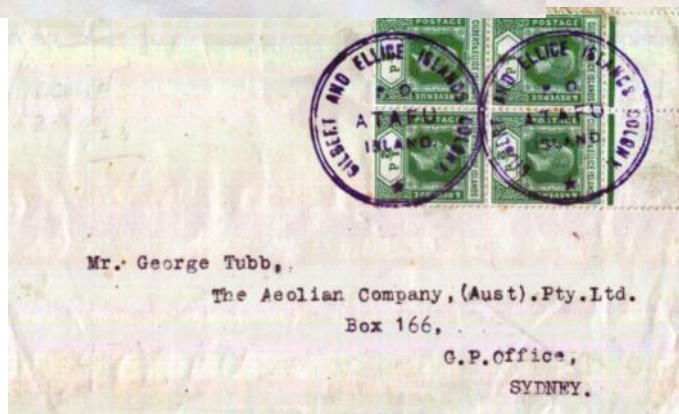
Lot 9



Lot 24



Lot 17

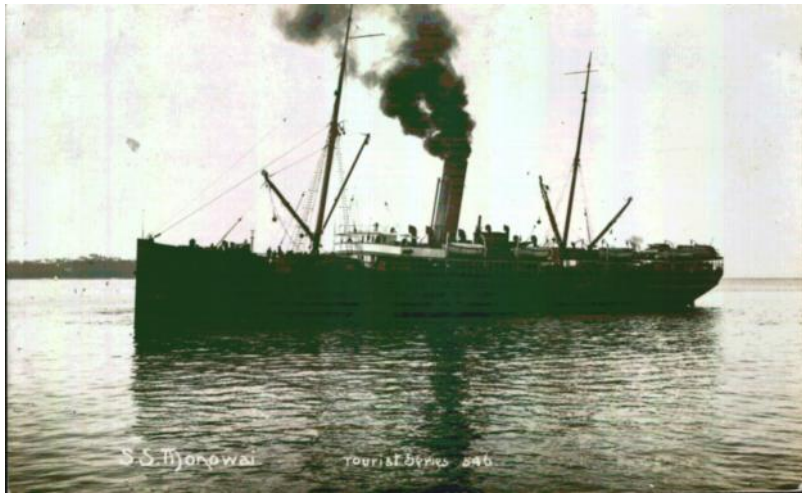


Lot 18

Estimates.

Please note:- All Estimates in this Auction catalogue are shown in Bold type on the extreme right of each lot description, and are in £ Sterling. For this Auction bids down to 60% of Estimate will be accepted.

EVERY Lot is illustrated on the PISC Web-site :- www.pisc.org.uk



Lot 15

Lot 16



Lot 5



Lot 17

Lot 20



Lot 21



Tokelau Items.

Air Drop & Air Mail Covers.

1. January 1947. W Samoa Peace cover with Peace 1d;2d + 3d O/P (SG199;215/6) addr to T Humphrey, Nukunono tied Apia cds 8.JA.4.7.2. With 4 line "First Mail Dropped by Plane Nukunono" in violet (type TC4). With boxed Air Mail (TC5). Nukunono9JA.47 arrival b/s. **50**
2. January 1947. Plain a/m cover addr to Rev A.R.Tippett, c/o Methodist Mission Office, Suva, with "Via Nukunono" in m/s Samoa 2½d x 2 (SG183) tied Apia cds 22JA.4.7.2. Nukunono arrival b/s 23.JA.47. With modified TC4 h/s in violet "Mail Dropped by Plane Nunkunono" **50**
3. February 1947. Costello printed cover (type SC2) with "Apia – Nukunono Airmail Dropped from Plane in Flight". W Samoa Peace 1d; 2d x 2 (SG215/6) tied Apia cds 12 FE 47. Nukunono b/s 13FE47 **30**
4. March 1947. Costello printed cover (type SC2) with "Apia – Nukunono Airmail Dropped from Plane in Flight". W Samoa Peace 1d; 2d x 2 (SG215/6) tied Apia cds 2 MR 47. Nukunono b/s 3MR47 **30**
5. May 1947. Costello printed cover (type SC2) with "Apia – Nukunono Airmail Dropped from Plane in Flight", with added typed inscription "Also first flight over Fakaofu & Atafu." Addr to T Humphrey, Nukunono. W Samoa 2d; 3d o/p (SG202?;199) tied Apia cds 21.MY. 4.7.1. Boxed Air Mail cachet in violet (type TC5). Nukunono arr b/s 21MY47. **70**
6. May 1947. Costello printed cover (type SC2) with "Apia – Nukunono Airmail Dropped from Plane in Flight", with added typed inscription "Also first flight over Fakaofu & Atafu." Addr to T Humphrey, Atafu. W Samoa Peace 1d; 2d x 2 (SG215/6) tied Apia cds 21.My.4.7.1. Boxed Air Mail cachet in violet (type TC5). With fine Atafu arr cds 21MY 47 on front. **100**
7. May 1947. Costello printed cover (type SC2) with "Apia – Nukunono Airmail Dropped from Plane in Flight", with added typed inscription "Also first flight over Fakaofu & Atafu." Addr to T Humphrey, Fakaofu with W Samoa ½s x 2; 4d (SG180;184) tied Apia cds 21MY.4.7.1. Boxed Air Mail cachet in violet (type TC5). Fakaofu arr b/s 21MY 47. **100**
8. July 1947. Costello printed cover (type SC2) with "Apia – Nukunono Airmail Dropped from Plane in Flight" addr to R Wells Nukunono. W Samoa 1d;4d (SG181/4) tied Apia cds 27JL 47. Nukunono arr cds 28JE (modified in m/s to JL) 47 on front. **35**
9. August 1949. Tagua pict cover (type SC5) addr to "The District Officer, Atafu Atoll" with W Samoa 5d (SG205) tied Apia cds 22AU.49. Atafu arr b/s 22AU49. Inwards flight in preparation for first outgoing airmail. Stated to be one of only 2 covers carried on inwards flight. **100**
10. August 1949. Plain "Costello" cover 1948 set (SG1/3) tied Atafu 23 AU 49, with "First Flight (TC22) & "Air-Mail" (TC23) cachets. Atafu (23AU); Apia (26AU.49) & Suva 12SP49 b/s. **25**
11. August 1949. Plain "Costello" cover 1948 set (SG1/3) tied Fakaofu 24 AU 49 x 2, with "First Flight (TC22) & "Air-Mail" (TC23) cachets. Apia (26AU.49) & Suva 12SP49 b/s. **25**
12. August 1949. Plain "Costello" cover 1948 set (SG1/3) tied Nukunono 26 AU 49, with "First Flight (TC22) & "Air-Mail" (TC23) cachets. Apia (26AU.49) & Suva 12SP49 b/s. **25**
13. November 1949. Tagua pict cover (type SC5) with 1948 set (SG1/3) tied Nukunono 23NO 49. Addr to Costello, Suva, with typed inscription in red "Special Air Mail/Tokelau Islands – Western Samoa/ 23rd November 1949". Apia arr b/s 23NO49. **25**
14. September 1981. Inaugural Flight by Grumman Goose ZK-ERX 22 Sept 1981. 1976 definitives to \$1 (SG49/56) on 2 covers with Nukunono (T38) & Atafu (T41) pict cancels. Unaddressed. **20**

Other covers etc.

15. S.S.Monowai. Real p/c by Frank Duncan & Co, Auckland, Tourist Series 546.V good cond. **50**
16. GEIC Pandanus set ½/2½d (SG8-11) on plain cover to England (rest of address excised – but handwriting of "England" and shape of excised portion of address strongly suggests that this too is an Iremonger cover) tied by "Gilbert & Ellice Islands Protectorate/ Postal Department" h/s x 3 (TG5). m/s note on reverse "from Nukunono". This is the cover referred to by Vernon in "Philatelic Handbook of the Gilbert & Ellice Islands) p 3.101. Unique early item. **100**
17. GEIC KGV 2/- (SG21) on regd Iremonger cover to UK tied by "Gilbert & Ellice Islands Protectorate/ Postal Department" h/s in violet (TG5). M/s note states "from Nukunono". **200**
18. GEIC KGV 4d (SG17) on cover addr Ch Mugele, Apia, tied by v fine Gilbert and Ellice Islands Colony, P.O Fakaafu Island (TG7 - Vernon Type 11) in violet. **200**
19. GEIC ½d x 4 (SG27?) on plain cover to George Tubb, Sydney, tied v fine Gilbert and Ellice Islands Colony, P.O Atafu Island (TG6 - Vernon Type 11) x 2 in violet. M/s "Received 23/10/23" on rev **200**

20. 1927. Registered Iremonger cover to England Samoa "Huts" 8d (SG162) tied Atafu cds (T1) with complete strike alongside (for registration) 5AP37 (error of year – "37" for "27"). Apia regd label (type TR2) No 59 Apia b/s 29JL27; Registered Plymouth 13SP27. **150**
21. 1927. Registered Iremonger cover to England Samoa "Huts" 1/- (SG164) tied indistinct Nukunono cds (T3). NZ regd label (type TR1) No 55, with "Fakaofu" deleted and "Nukunono" added in m/s. Apia b/s 5NO27; Registered Plymouth 8DE27. **150**
22. May 1929. Plain cover to Wilcox Smith, Dunedin with Samoa 1d "Huts" (SG154) tied Fakaofu cds 10MY – 29 (T2). Typed inscription "From the Union Islands,/Under Samoan Jurisdiction" **100**
23. Oct 1929. Plain cover to Wilcox Smith, Dunedin with Samoa 1d "Huts" (SG154) tied Fakaofu cds 15OC – 34 (T2). Typed inscription "From the Union Islands,/Under Samoan Jurisdiction" **100**
- 24. Swains Island.** Cover from Paul Diefenderfer to his wife in Pago Pago, US 2c tied Pago Pago cds 15May1931. Signature of Paul Diefenderfer top left with straight line "Swains Island" h/s in violet (incl in Burgess listing – p5-7). V early use of Swains Island h/s. **100**
25. September 1936. Plain cover to Mosman N.S.W with W Samoa 1d (SG181) tied Fakaofu Union Islands (type T2) 20SP-36. Apia b/s 6OC 36. **50**
26. Fr Deihl postcard. "This is a picture I snapped on a recent trip of 1000 miles to the Union Group", believed to show the "A.S.Makoa" off the reef at Nukunono. With typed sheet giving further details. Undated but early 1930's. **40**
27. September 1936. Unaddressed O.H.M.S envelope with W Samoa 1d x 3 (SG181) each tied by Nukunono (22SP36) T3; Atafu 30SP33.6 (T1); Fakaofu 2-OC36 (T2). Atafu 30SP33.6 b/s. (Atafu date incorrectly set as 33.6 not 36). **40**
28. June 1937. Sm cover addr to Engr Hodge, R.N, HMS Wellington, Fakaofu, Union Is with W Samoa 1d (SG181) tied Fakaofu 17JE –37 x 2 (T2). Similar strike on rev. **50**
29. June 1937. Sm cover addr to Engr Hodge, R.N, HMS Wellington, Atafu, Union Is with W Samoa 1d (SG181) tied v fine Atafu 18JE37(T1). **50**
30. June 1937. Sm cover addr to Engr Hodge, R.N, HMS Wellington, Nukunono, Union Is with W Samoa 1d (SG181) tied fine Nukunono 19JE37 (T3). **50**
31. August 1938. Sm cover to Invercargill, NZ with W Samoa 1d (SG181) tied good Atafu 27AU38 (T1). Apia b/s 31AU38. **50**
32. September 1938. Sm cover to Invercargill, NZ with W Samoa 1d (SG181) tied good Fakaofu 3SP 38 (year unclear) T2, **50**
33. March 1940. Sm cover to Invercargill, with W Samoa 1d (SG181) good Nukunono 7MR40 (T3). Rubber d/s on rev 18Mar1940 with m/s note "*took 2yr 7 (months) to get this cover returned to me*". **50**
34. April 1946. Sm cover to Wellington, NZ with W Samoa ½s x 2 (SG180) tied v fine Fakaofu 17AP-46 x 2 (T2). With Apia transit 18MY46 on front & reverse. **30**
35. May 1946. Sm cover to Hamilton with W Samoa 1d x 2 (SG181) tied Atafu 24MY46 (part double strike so bit smudged) T4. V fine Atafu (T4) cds 4NO46 on rev(note 5 month diff in dates). **30**
36. September 1946. Sm "Islands" cover with Atafu illustration,typed addr to Auckland, with 1/- o/p tied fine Atafu Tokelau Islands (T5) 14SP46. Clearly **error of date** (probably should be 1963!). With companion cover for Fakaofu 2d (SG3) tied Fakaofu 16AU63 (T6). **30**
37. September 1946. Sm "Islands" cover with Atafu illustration,typed addr to LAC Andrews, RNZAF Laucala Bay Fiji with 1d;2d;1/- o/p (SG2/3-5) tied Atafu Tokelau Islands (T5) 14SP46. Clearly error of date (probably should be 1963!). With companion covers for Fakaofu 2d (SG3) 16AU63 (T6), and Nukunono 1d;2d;1/-o/p (SG2/3-5) tied Nukunono 17AU63 (8). **30**
38. November 1946. W Samoa Peace set (SG215/8) on registered "Thompson" cover tied Fakaofu 18NO – 46. NZ regd label (TR1) No 54 with Fakaofu (T2) d/s 8NO-46 (note "1" of day missing). Apia 28NO46; Sydney 22DE46; William St 23DE46 b/s. **30**
39. June 1947. W Samoa 6d (SG217) on regd Peace env to UK (Wells cover) tied Fakaofu 12JE – 47 (fine) T2. NZ regd label (TR3) No 156 Fakaofu (T2) cds 12JE-47 (fine). Apia 23JE47 b/s. **20**
40. June 1947. W Samoa 2d x 3 (SG216) regd Peace env to UK (Wells cover) tied Nukunono 132JE – 47 (fine) T3. NZ regd label (TR3) No 137 Nukunono (T3) cds 13JE47 (fine). Apia 23JE47 b/s **20**
41. June 1947. W Samoa 2d x 3 (SG216) on regd Peace env to UK (Wells cover) tied Atafu 14JE 47 (fine) T4. NZ regd label (TR3) No 133 with Atafu (T4) cds 14JE47 (fine). Apia 23JE47 b/s. **20**
42. June 1947. Sm On His Majesty's Service env, unstamped, addr to Ugapo Eti, Chief Inspector of School, Apia, Samoa (m/s). Fakaofu (T2) cds 1112JE – 47. Apia 17JE 47 b/s. Commercial. **75**

43. December 1947. W Samoa ½d;2½d (SG180;183) on cover to NZ with Atafu 17DE47 x 2 (v fine) (T4).Some age spotting to lower part of cover, does not affect stamps/pmk's **20**
44. June 1948. Set of 3 pict "Last Day of Issue" covers with W Samoa Peace set on printed covers for each island to Costello, Suva, dated 21JE48 **30**
45. June 1948. 1948 set (SG1/3) on sm cover to Auckland tied Nukunono cds 16JE48 x 2 (T8 but thin arcs and code 1 after year). **20**
46. October 1948. 1948 set (SG1/3) on sm cover to Illinois (redirected on arrival) Nukunono 20C48 (T8 but thin arcs & code 1 after date). Redirected on arrival Sterling Ill cds Nov 8 on front. Slight toning around edge of stamps. **10**
47. October 1948. 1948 set (SG1/3) on sm cover to Apia Atafu cds 15OC48 **5**
48. December 1948. 1948 set (SG1-3 on sm cover to Apia tied fine Fakaofu (T6) 01DE48 **5**
49. May 1949. 1948 set (SG1/3) on sm cover to Christchurch tied Nukunono 6MY49 **5**
50. July 1949. 2d x 3 (SG3) incl lower margin with Pl nos to Auckland tied Fakaofu 21JL49 **5**
51. March 1951. 1948 set + addt 2d(SG1/3) to Christchurch tied Nukunono cds 15MR51, Apia b/s 24MR51 + m/s 28/4/51 (arrival?) **5**
52. October 1952. Set of 3 sm covers to California with var examples of SG1 – 3 tied by Fakaofu (T6) 10C52; Atafu 30SP52 (T5 strike doubled); Nukunono 29SP52 (T8). With Apia 20C52 b/s. **20**
53. December 1952. Sm hand-addr cover to Devon, 2d x 2 (SG3) tied Fakaofu 20DE52 (T6). **5**
54. October 1953. Pict Coronation cover (showing Crown). 3d Coronation (SG4) tied Nukunono 20OC53 (T7) to USA. **3**
55. June 1955. SG1-3 plus Coronation SG4 to GB tied Nukunono 8JE55 x 2 **5**
56. August 1955. SG1 & 3 to Yorkshire with Nukunono 12AU55, Apia b/s 25AU55. **5**
57. May 1956. Aerogramme with 1/- o/p (SG5) to UK tied indistinct Fakaofu 4MY56 (T6) with b/s dater 12Jun56. **6**
58. September 1956. 1/- O/p x 2 (SG5) on sm a/m cover to Canada tied Nukunono 18SP56 **5**
59. December 1956. Reply paid postcard from USA(both parts) with United Nations 1c;3c stamps tied United Nations New York pict m/c Oct 24 1956, addr to Danger Island Tokelau Islands (Danger Island as it was then known is in the Cook Islands). Apia transit 17No56. 1c;3c United Nations stamps canc fine Nukunono 14DE56 x 2 (T8 but code 1). Westwood N.J arrival cds Feb9 57 **20**
60. October 1958. Sm cover to Wilcox Smith, Dunedin 1d;2d (SG2/3) tied Atafu 12OC58 x 2 v fine (T5). With typed inscr on face "Eclipse of Sun/ATAFU 12.10.58", Apia transit 25NO58. **15**
61. April 1959. Aerogramme with SG2/3 to Auckland tied Nukunono 21AP59 (T8) **5**
62. April 1959. Fine coloured p/c of Nukunono, Tokelau Islands (could be home-made?) 1d;2d; 1/- o/p (SG2;3;5) regd & addr to Fresno with NAC a/m etiquette. Tied Nukunono 21AP 59 x 2 fine (T8). Apia regd label (TR7) No 116. Fresno arr d/s May 21 1959. Ident SCP1 by Burgess p18-12 **20**
63. August 1959. Visit of Lord Cobham Gov Gen of NZ on H.M.N.Z.S Royalist. 1d;2d; 1/- o/p (SG 2;3;5) on sm cover ("crown" on flap therefore possibly from Cobham) to Birmingham tied indistinct Fakaofu cds (T6)13AU59, also tied oval "Mail Office H.M.N.Z.S Royalist h/s. **50**
64. August 1959. Visit of Lord Cobham Gov Gen of NZ on H.M.N.Z.S Royalist. 1d;2d; 1/- o/p (SG 2;3;5) on sm cover ("crown" on flap therefore possibly from Cobham) to Edgbaston, Birmingham tied Atafu cds (T5)11AU59 x 3. Identical to last item but **no** "Royalist" h/s **30**
65. August 1959. Visit of Lord Cobham Gov Gen of NZ on H.M.N.Z.S Royalist. 1d x 6 (SG 2) on rev of sm cover ("crown" on flap therefore possibly from Cobham) to Edgbaston, B'ham tied indistinct Nukunono cds (T7) x 2 13AU59, also tied by 3 complete strikes oval "Mail Office H.M.N.Z.S Royalist h/s. **50**
66. 1956 & 1959. Set of 3 covers to same address in UK each with SG2 & 3. Nukunono 12AP56 with Apia regd label No 801; Atafu 17DE59; Fakaofu 18DE59 with Apia 23DE59 b/s. **15**
67. September 1962. Map covers for Atafu & Fakaofu each with 1d;2d + 1/- O/p (SG2/3-5) addr to Apia tied Atafu 10SP62 (T5); Fakaofu 8SP62 (T6). Apia b/s 17SP62 **10**
68. April 1964. Sm cover to NZ with W Samoa 4d (SG242) tied Fakaofu 2AP64 (T6). Apia 4AP64 b/s. Fine & clea **6**
69. August 1964. Sm cover (typed address) to Wellington NZ with 1/- O/p (SG5) tied poor Atafu 27AU64 (T5). Apia 7SP64 b/s. **4**
70. November 1966. 6d;8d;2/- O/p (SG6-8) each on 3 sm covers to Wellington NZ. Atafu; Fakaofu; Nukunono each dated 8NO66 **15**
71. May 1967. NZ fiscal o/ps 6d; 8d; 2/- (SG6/8) on sm cover to Wellington, NZ tied Nukunono 4MY67 (T8) (fair). Part Apia b/s 26MY67. **10**

72. September 1967. Decimal O/ps (SG9-15) on longer cover tied Fakaofu (T6) 4SP67. With 3 line boxed cachet "First Outgoing Mail/Since Issue of/Decimal Currency Stamps" (TC11). **3**
73. November 1967. ½d x 8; 2/- Arms (SG1/8) on regd cover to Wellington. Nukunonu 8NO67. Regd label No 9 Nukunonu in red (TR16/17). Via Air Mail in violet. Apia 22NO67 & Wellington 8DE67 b/s **15**
74. November 1968. 5c; 10c o/p (SG11;13) on regd cover to NZ tied Nukunonu (T9) 18NO68. Regd label (TR13) No61 with Nukunonu 23NO68 cds. NZ arr 5DE68. **25**
75. May 1970. International Reply Coupon. 12c New Zealand, Nukunonu 10MY70 cds (T11) **10**
76. May 1970. 1c;2c dec o/ps (SG9;10) on sm cover to NZ tied Nukunonu 10MY70 (T11). **M.V.Kaituna** s/l ship cachet in red (x2) (TS32) **8**
77. 1971. Handicrafts 2c & 15c (SG26;30), prelim pencil sketches of artefacts depicted, 2c on vert laid paper (112 x 118mm), signed by Enid Hunter, Artist; 15c on thick translucent paper (111 x 86mm). **50**
78. February 1971. Unstamped regd a/m env (OHMS excised) addr to Holland, Nukunonu cds 10FE71 (fine) (T11). Rubber regd h/s TR21 No 127 in black ink. **20**
79. November 1972. 10c (SG17) on sm cover to NZ tied Suva Fiji slogan 28Nov1972. With 6 line **G.M.V Moana Roa** ship cachet in violet. (TS19) **8**
80. November 1973. Handicrafts set to 25c (SG25-32) on "Ocean Monarch visit to Tokelau Islands" pict cover, tied Atafu 27NO73. With 5 line boxed rect Ocean Monarch cachet in blue (TS8) **12**
81. January 1974. 2c;3c (26;27) on "Wells" cover tied fine Auckland Packet Boat cds 8JA74. **4**
82. February 1975. 3 "Burgess" visit covers Fakaofu 22FE75 (T6); Atafu 24FE75 (T5); Nukunonu 25FE75 (T10). All with "visit" cachet with individual island names added (T29). **10**
83. February 1975. 1c;3c (SG25/27) tied Apia cds 27FE75 to UK. With boxed 6 line M.V Cenpac Rounder, Nauru cachet & s/l ship cachet in blue. Apia Paquebot (TS3), + "Burgess" h/s (TC29). No 90 **8**
84. October 1976. Sm "islands" pict cover 1c;3c + 5c Fish (SG25/27 & 45) tied Apia cds 15OC76. 6 line boxed M.V Cenpac Rounder cachet in dark blue (TS12). **10**
85. December 1976. Var totalling 14c tied Apia cds 6DE76 x 2 addr to UK. Paquebot (Apia TS3) in red, "Courrier des Marins/Seamans Mail" etiquette. 5 line **M.V. Illyric** cachet (TS27) in black **8**
86. February 1977. Set of 3 covers all with Samoa adhesives Fakaofu 17FE77 (T6) also has T16 roller cancel 17-FE – Year removed); Atafu 21FE77 (T5 – with inverted dateline); Nukunonu 22FE77 (T10). M.V Cenpac Rounder 6 line boxed cachet & s/l name only cachet (TS11 & TS12) in dark blue & black (Atafu only). Island name in seriffed capitals in black. Oval Paquebot Mail (anchor) Posted at Sea in black. B/s Apia 25FE77. **50**
87. February 1977. Fish set (SG45/48) on regd cover to Apia tied Atafu 21FE77 (Type T5 but *with inverted dateline*). TR16 regd label No 08, (Atafu part cds). Apia b/s 25FE77. M.V Cenpac Rounder h/s (TS11 & TS12) in blue. ATAFU in black **12**
88. August 1977. Regd cover to NZ 5c x 3; 9c x 2; 15c (SG52/53;35) tied Atafu 1AU77 (T26). Regd label TR16 name in m/s, No 11. Regd receipt portion attached to reverse with Apia 25AU78 & Forrest Hill 29AU78. Note error of year in Atafu cds (77 for 78). **10**
89. December 1977. Regd cover to NZ 5c;50c (SG52;55) tied Fakaofu 15DE77 (latest date?) T6. With regd label TR16 Fakaofu (TR19) applied in red, No 62. **10**
90. February 1978. 2c;5c (SG26;45) tied Apia cds 3FE78 to Aust. Rect Paquebot in red. (solid lines). S/line "M.V.Cenpac Rounder" & 6 line rect Cenpac Rounder cachet in blue (TS11 & TS12) **5**
91. June 1978. 1c;2c;5c (SG49;50;52) tied Nukunonu 1JN78 x 2 (good) (T28). S/line "M.V.Cenpac Rounder" & 6 line rect Cenpac Rounder cachet in blue (TS11 & TS12). Apia b/s 7JE78. **5**
92. July 1978. 5cx3;9c x 2; 15c (SG52;53;35) to NZ Fakaofu 27AU78 (incorrect month – should be July) (T27). Regd label (TR16) Fakaofu in red (TR19). Apia b/s 25AU78. **5**
93. March 1979. Bird 30c x 2 (SG60) on sm cover to UK tied Nukunonu 23MR79. Crossed for registration but no regd label or marks. Pict **M.S.Lindblad Explorer** cachet in red (TS28) **5**
94. May 1979. A/m cover from Retzlaffs' Tour & Travel Services PO Box 195, Apia, to J Dearing Box 179 Apia with rectangular Permit No 1 AND Permit No 2 both in black alongside each other. M/s 10.5.79 on reverse. Possibly only recorded use of both permit h/s on same cover! **20**
95. September 1980. Set of 3 longer regd unaddressed covers for "Transglobe Expedition" M.V.Benjamin Bowring, each with 1978 Canoe Racing set (SG65/68) tied Fakaofu T14 (29SP80); Atafu T13 (29SP80); Nukunonu T12 (30C80). Boxed pict ship cachet in blue/black on each (fine). All with TR23 regd label with upper portion of T12-T14 applied to show name. Receipt section attached to rev of each. Fakaofu No 52; Atafu No 54; Nukunonu No 87, Atafu & Fakaofu have cds applied to receipt **25**

96. September 1980. Set of 3 small unaddr a/m envfor “Transglobe Expedition” M.V. Benjamin Bowring, each with 1977 Birds set (SG57/60) tied Fakaofu T14 (29SP80); Atafu T13 (29SP80); Nukunonu T12 (31SP80 – note error of date). Boxed pict ship cachet in blue/black on each (fine). **25**
97. September 1980. 3 small covers (typed address to Apia) with M.V. Benjamin Bowring pict ship cachet in blue/black, each with 1977 Bird set (SG57/60) tied Fakaofu T14 (29SP80); Atafu (30SP80) & Nukunonu T12 (31SP80 – note error of date). **25**
98. September 1980. Small unaddressed cover with M.V. Benjamin Bowring pict ship cachet in blue/black, with 1977 Bird set (SG57/60) tied Fakaofu T14 (29SP80). With 4 line cachet in blue/black “Posted at Sea/off Swains Island/ *Date 28-09-1980*/Number 33 of 40” **15**
99. September 1980. Small unaddressed cover with M.V. Benjamin Bowring pict ship cachet in blue/black, with 1977 Bird set (SG57/60) tied Nukunonu T12 (30C80). With 4 line cachet in blue/black “Posted at Sea/off Fenuafala Island/ *Date 3-10-1980*/Number 38 of 40” **10**
100. September 1980. Small unaddressed cover with M.V. Benjamin Bowring pict ship cachet in blue/black, with 1977 Bird set (SG57/60) tied Nukunonu T12 (30C80). With 4 line cachet in blue/black “Posted at Sea/off Fenuafala Island/ *Date 3-10-1980*/Number 28 of 40” **10**
101. Set of 3 unaddressed covers with variety of adhesives. Each with “4 box” islands cachet (see pp18-14c(4)). Nukunonu (T28) 19AP82 cachet in violet; Atafu (T29) 20AP82 cachet in red; Fakaofu (T27) 21AP82 cachet in green. **15**
102. July 1982. Regd cover to UK. 50c x 3 (SG55) tied Atafu 23JY82 (T43 early). Regd label TR22 Atafu in black (TR18) No 55. **5**
103. November 1982. Inwards cover Colton, Oregon NOV10 1982 to Postmaster Nukunonu. Returned. Nukunonu arrival cds 22NO82 on front. **15**
104. July 1983. 3 regd covers to UK with var ’76 definitives to 50c & \$1, tied Atafu 6JY83 (T43); Fakaofu 4JL83 (T44); Nukunonu 5JY83 (T28). Regd labels (TR22) names in black, Atafu No20; Fakaofu No 69; Nukunonu No 21. Chelmsford arr 13AU83. **25**
105. November 1983. 63c (SG95) on “Island Names envelope” tied Nukunonu 15NO83 (T48). With 3 ring MV. Frysna ship cachet in red (signed) (TS31–vessel featured on stamp) **5**
106. September 1984. Ausipex Souvenir Card with illustrations of SG1-3. (SCC1) unstamped. **5**
107. November 1984. Set of 3 covers to UK each with 48s from 84 Copra set tied Nukunonu 23NO84; Atafu & Fakaofu 24NO84 (T43;44 & 48). Each env with large TOKELAU (serifs) & island name below. Also Master/MV Avondale (signed) (TS39) **30**
108. December 1984. 1976 Definitives (SG49-56) on 3 pict covers inscribed “Last Day of Sale”. With Atafu (T53); Fakaofu (T54); Nukunonu (T55) 4 Dec 1984 ‘Last Day of Sale’ d/stamps. **15**
109. September 1985. Set of 3 regd covers 50s Fishes x 2 (SG114) tied fair cds Atafu (T43); Fakaofu (T44); Nukunonu (T45) 24SP85. Regd label TR25 names applied using TR17;18;19 h/s in black, Atafu (No18); Fakaofu (No12); Nukunonu (No20) **25**
110. 1986 (date unclear). 18c; 60c (SG125;128) on longer type OHMS cover to UK tied poor (outline only) Fakaofu cds. Regd label TR25 No42 Fakaofu above in black. Opened by HM Customs at Mount Pleasant, London (label 5Mar1986) affixed to reverse, Circ “Crown 58” h/s on front. Remains of P.O resealing tape at right. **15**
111. August 1986. Set of 3 regd covers 75s Fishes (SG115) tied poor T69-T71 cds 19AU86. Regd label TR25 names added by h/s TR17-19 in black. Atafu (No 70); Fakaofu (No85); Nukunonu (No 87). Chelmsford arr b/s23OC86 **20**
112. May 1987. 2 regd covers to UK each with 23s Fishes x 2 (SG112) tied Atafu 1JN89 (T69); Nukunonu 1JN87 (T71) with regd label T25 names in m/s Atafu No35; Nukunonu No 54. On reverse rect Onward Registration Apia Post Office 28May1987. This suggests that date stamps had incorrect month (Should be May not June). **20**
113. May/June 1988. 2 local a/m covers to Wesley Bookshop, Apia. 10s (SG81) tied Nukunonu (T31) 27MY%88; Fakaofu (T30) 26JN88. S/line island name h/s applied clear of address. **2**
114. July 1988. 4 covers incl 3 regd pict fdc Australia Bicentenary (SG154/8 strip) with island f.d cancels (T103-105) 30July 1988. Regd labels (TR25) island names in m/s, Atafu No51; Fakaofu No 8; Nukunonu No86. Plus addt unaddr example tied Sydplex 88 pict cancel (TC51). 4 covers. **30**
115. September 1988. Set of 3 regd covers each with 23s Fishes x 2 (SG112) tied fair/poor T69 – T71 cds 23SP88. Each with regd label TR25 names in m/s F/Atafu No 74; Fakaofu No 73; F/Nukunonu No 75 (?were labels for Atafu & Nukunonu applied at Fakaofu?). Rect Onward Registration Apia Post Office cachet on reverse of each with 8JUL1987 & 2DEC1988 dates **20**

116. May 1990. Set of 3 covers to UK each with "illegal" \$3 Penny Black M/s tied by unlisted Penny Black f.d cancel for each island 3MAY1990. **30**
117. QSL card 7 Jan 1960 from Nukunono giving "DX'Pedition" details on rev, on board ketch "Maroro", equipment floated ashore etc.. **10**
118. QSL card 1965 Asia-Pacific DXpedition, 16 Nov 65 from "Tokelaus". **10**
119. QSL card (Central New Mexico DX Assoc) Tokelau Islands Expedition 27 Oct 1974. **10**
120. QSL card Marty Maessen, Apia, W Samoa. 7/5/1977. Tokelau card showing outline of islands **10**
121. QSL card 10-17 May 1980 Tokelau Islabds Dxpeditio. Card dated 1.5.80 **10**
122. QSL card 5 June 1981 from Nukenonu (sic). Buff card. **10**
123. QSL card. Fine pictorial card showing Nukunono village, giving details of trip Apia-Nukunonu-Apia on board ketch "Banyandah", dated 7 June 1981. **10**
124. QSL card. DXpedition to Nukunonu, Apr 13 1982 (North California DX Foundation ZM7VU) **10**
125. QSL card. Similar to previous card but 14 Mar 1984 **10**
126. QSL card. Similar to previous card but 18 MRZ 1984. **10**
127. QSL card 1986 from N California DX Foundation (diff group to above.) Blue pic card. **10**

Miscellaneous Covers.

128. 1971-79. 10 diff unaddressed pict fdcs; 1971 Defins; 72 SP Comm; 73 Coral; 74 Shells; 75 Fish; Oct 76 Defins; 77 Birds; 78 Coron Anniv; 78 Sports; 79 Sports. **20**
129. 1980-88. 10 diff unaddressed pict fdcs. 80 Sports; 81 Sports; 82 Handicrafts; 82 Fishing; 83 Transport; 83 Pastimes; 84 Copra; 85 Architecture; 86 Livestock; 88 Christmas. **20**
130. Coloured postcard size illustration "P4 Nukunonu, Tokelau Islands", showing view of the village. Blank back. **50p**
131. 1948 ½d; 1d; 2d (SG1-3) on sm pict £Yacht" cover tied Nukunono cds 22JE48 (first day). Note 5 identical covers **EACH** at **50p**
132. 1948. 2 sm covers to USA each with 1d; 2d (SG2/3) a) tied Nukunono 20C48 (fine); b) Fakaofu 8DE51 (with Apia 10DE51 b/s) **5**
133. 1953 Coronation (SG4) on sm buff cover to NZ tied Atafu cds 16JE53 (f.d & v fine) **2**
134. 1953 Coronation (SG4) 3 covers (2 pictorial, 1 plain) each tied Nukunono f.d cds 16JE53, one cover has horiz pair. **6**
135. 1956. One Shilling O/p (SG5) on sm clean cover to UK tied Nukunono cds 27MR56 (f.d) **2**
136. 1956. One Shilling O/p (SG5) on sm h-written cover to NZ tied Nukunono cds 27MR56 (f d) **2**
137. 1966 Fiscal o/p's (SG6-8). 3 sm covers to NZ each with set tied Atafu; Fakaofu; Nukunonu 8No66 cds (faint). **10**
138. 1967 1c-20c decimal o/ps (SG9-15) in longer type cover tied Fakaofu cds 4SP67 x 2. With 3 line boxed "First Outgoing Mail" cachet in black. 7c o/p has shaved top bar at left. **5**
139. 1967 decimal 1c; 2c; 10c o/ps (SG9-11) on sm cover to Switzerland tied fine Fakaofu cds 28AU68 (not f.d) x 2. Apia b/s in transit 3SP68. **5**
140. 1969 Xmas 2c x 2 (SG20) on sm "islands" pict cover tied Nukunonu cds 14NO69 (fine). With boxed "First Outgoing Mail" cachet in black. NOTE 6 identical covers **EACH** at **50p**
141. 1969 History set (SG16-19) on sm regd cover to NZ tied Nukunonu 14SP70 (not f.d). With regd label (No 68) Nukunonu in black below No. Sydney & Clarence St b/s. **3**
142. 1970 Xmas 2c x 2 (SG21) on sm "islands" pict cover tied Nukunonu cds 16NO70 (fine). With boxed "First Outgoing Mail" cachet in black. NOTE 4 identical covers **EACH** at **50p**
143. 1970 Xmas 2c x 2 (SG21) on sm "islands" pict cover tied Atafu cds 15NO70 (fine). With boxed "First Outgoing Mail" cachet in black. **1**
144. Bundle of 12 unaddr pict fdc's 1971 Defins; 73 Coral; 74 Shells; 75 Fish; 76 Defins; 78 Anniv of Coron; Sports; 79 Sports; 81 Sports; 82 Handicrafts; Fishing; 83 Transport, with Nukunonu f.d.canc **18**
145. 1971 Discovery set (SG22-24) on sm "islands" pict cover tied Nukunonu 10FE71 x 2 fine. With 2 line "First outgoing mail since date of issue" h/s in black. **2**
146. 1975 Fish (45-48) on longer type pict fdc tied Nukunonu fd cancel 19 Nov 1975. With 6 line "M.V.Cenpac Rounder" ship cachet in black. **6**
147. Unaddressed a/m cover with 1c-5c defins (SG49-52) tied variously Fakaofu 31MY78; Nukunonu 1JN78; Atafu 3JN78. With s/line "M.V.Cenpac Rounder" & boxed 6 line m.v.Cenpac Rounder cachet both in blue. **12**

148. 1983 Pastimes 2 regd fdc's to UK tied a) Atafu cds 2NO83 x 2 & with regd label (No 34 Atafu in black below No; b) Fakaofu 2NO83 x 2 with Fakaofu red label (No 91 in black below No) **12**
149. 3 covers to Australia 20c definitives x 2 tied Atafu 1JA84; 50c definitives tied Fakaofu 1JA84; 50c definitives tied Nukunono 30JA84. All redirected to UK on Arrival, with Aust adhesives added tied Perth 19Feb84. All with "AirMail" h/s in red. **15**
150. 1984 Fish definitives on pict regd fdc tied Fakaofu f.d cancel 5Dec1984 x 3, but with Nukunono regd label (No 57). **10**
151. 1985 Native Trees (SG118/123) on pict regd fdc to UK tied Fakaofu fd cancel 26Jun1985 (fine). With Fakaofu regd label (No 5) Fakaofu applied with black h/s. **6**
152. 2 regd a/m covers to UK various values making 80c rate, adhesives tied Nukunono cds 12FE88, one with Nukunono regd label No 69 (name in m/s); other with similar label but Atafu in m/s (No 3). Both with Apia Outward Registration h/s 18Feb1988 on reverse. **10**
153. 2 regd covers to UK, a) 1969 History set + Fish 50c; b) 1972 SP Comm + 50c Fish each tied Atafu T69 27AP87 (poor/fair). Both with Atafu regd labels (No 27 & 30), Atafu added in m/s. Apia Outward Registration 5May1987 in violet on reverse of both. **7**
154. 1987 Livestock (SG136-141) each on 3 pict fdc's tied Atafu; Fakaofu & Nukunono 21MY87. Addr to UK, Atafu & Nukunono examples have S Francisco m/c cancels 3Jun1987 tying stamps. **6**
155. Bundle of 12 items all with various 1984 Fish definitives 2s to 75s addr to UK, includes 4 registered (all Nukunono) but generally postmarks only poor to fair. **18**
156. 1988. 1979 Sports 10c (SG69) on sm comm. a/m cover to Wesley Bookshop, Apia tied Atafu cds 3JN88 x 2 (fine). With s/line "Atafu" alongside **6**
157. 9 addr f.d.c.'s. May 1987 Flowers set on 3 fdc's 6 May 1987; Dec 1987 Sports set on 3 fdc's 2 Dec 1987; 1988 Political Devel set on 3 regd fdc's 10August 1988 Regd labels (names in m/s) Atafu No 52; Fakaofu No 9; N/nonu No 87. **10**
158. M.V Aoni ship cachet tying Tokelau adhesives on 2 sm covers to Aust a) tying 1969 Xmas x 2 with fine Atafu cds 16DE72 (date inv); b) tying Discovery set (Apia transit 19JA73 on rev) **10**
159. M.V Frysna ship cachet in red on 2 sm covers to UK. Var adhesives tied a) Atafu 1JY85; b) Fakaofu 1JL85. Also tied with circ Western Samoa cds 2JY85. With "Air Mail" in violet. **10**
160. Cover at 90c rate to Aust SG171 & 210 tied by large rect Nukunono d/s 15Dec1999 x 2 **5**
161. Tokelau 1982 \$1 Coin in presentation Case. Silver Proof. With explanatory leaflet. **20**

Other Non Tokelau items from Clive Harvey collection.

162. **Pitcairn.** Superb pict cover from Saga Rose 50th Anniv Round the World Cruise. Pitcairn \$1.50 (SG589 – showing Saga Rose) tied pict 50th Anniv d/s 10Feb2002. **10**
163. **Samoa.** \$1 Silver Coin in presentation case - Olympic Games – Los Angeles 1984. Silver Proof showing Boxing on reverse. **15**
164. **Tonga.** Tin Can Canoe Mail. 1s & 7s tied Niuafu'u cds 22FE68 (indistinct) on Matson line pict cover (S.S. Mariposa cachet on rev). Tin Can Canoe Mail cachet in green. With enclosed postcard showing the Tin Can Canoe. **6**
165. **Tonga.** Tin Can Mail. Longer "Costello" cover – Last Tin Can Mail, Evacuation Cover Dec 1946. 2½d (SG58 – Cat £40) canc in m/s 21/12/46 by Postmaster (signed). With 4 line M.V. Matua cachet, on front; fine oval Pursers Office M.V. Matua on rev with Suva arrival 27DE46. **25**
166. **Tonga.** Tin Can Mail. Longer "Costello" cover – Last Tin Can Mail, Evacuation Cover Dec 1946. 1½d x 2; ½d (SG56; 74) canc in m/s 21/12/46 by Postmaster (signed). With 4 line M.V. Matua cachet, on front; fine oval Pursers Office M.V. Matua on rev with Suva arrival 27DE46. **25**

Ruth Tyler Collection.

Postmarks and other details are based on information contained in PISC publication "Cancellations of the Cook Islands & Niue" by A.R. Burge (1971) and subsequent supplements.

Rarotonga.

170. 2½d Rose (SG8) with nicely centred, almost comp strike Rarotonga first circ cancel (Burge A2) **3**
171. Makea set 1d – 10d (SG6-10) on sm regd cover to Melbourne tied Rarotonga d/s (type A3 – name above date) 12JE94. Oval "R" in violet with no added in red ink. Via Auckland 25JE94. A fine early cover. Some adhesion at centre right & left not affecting stamps. **50**

172. Postcard (Fr Poly scene) to New Plymouth, N.Z with Makea 1d (SG29) tied Rorotonga cds (type A6) 24JE08. **5**
173. Regd cover to UK with set of 12 o/p NZ values ½d–1/- (SG46-59) tied Rorotonga cds (type A6) 20OC19. Rubber stamp regd label Rarotonga script diag applied (type AR4). London b/s 30NO19 **50**
174. Makea 10d green (SG19) on piece tied Rarotonga cds (type A7) 8AP25. **5**
175. Sm cover roughly opened at top to Wellington with Rarotonga 1d x 2 (horiz pair SG71) tied Rarotonga cds (type A7) 4MY25. Right hand stamp has “Double Derrick” flaw (SG71a). **25**
176. Cover to Southwold U.K 3 x ½d (SG9) (one other stamp removed), tied Rarotonga cds (type A7) 21JE30. M/s “R.M.S Tahiti” upper left. With original letter from T.C Worrall, Motor Repairs, Rarotonga, with silhouette of early motor car. Cover somewhat careworn but good item. **30**
177. NZ “Admiral” 1d on sm cover to Auckland tied Rarotonga cds (type A7) 18SP34 **5**
178. KGV S Jubilee O/ps (SG113-115) on sm regd cover to Dunedin tied Rarotonga cds (type A7) 7SP35 (not f.d use). NZ type regd label (type AR6) No 169 Rorotonga diagonally applied in green/blue. **12**
179. 37 Coron 1d; 2½d (SG124/5)+½d on sm regd cover to Cuba tied first day Rarotonga cds (type A8) 1JE37. With Rarotonga regd label (type AR7). N.Y transit 3 Aug; & Cuba arr b/s 7 Aug 1937. **8**
180. Censored cover. 3d o/p (SG130) on sm cover to California tied Rarotonga cds (type A8b– short leg to “R”) 8 AU41. Opened & resealed by NZ Censor, h/s 123. Rancho Santa Fe arr d/s 8 Oct 1941 **15**
181. 2 covers. 1946 Peace set on pict fdc (SG146/9) tied Rarotonga 4JE46 (type A8a) plus 1940 3d O/p (SG130) on plain fdc tied Rarotonga 2SP40 (type A8b – with short leg to “R”). **3**
182. United Nations Day pict cover with 2d (SG36) tied Rarotonga cds (type A9a -fine) 24OC52 **4**
183. 53 Coronation pict regd cover to Calif, cormn 3d x 2; 6d (SG160/1) tied Rarotonga cds (type A9d) first day 25MY53. Regd label (type AR8a). N.Y transit 1AU53. **2**
184. 1955 cover to Germany ½d x2; 1d; 2d (SG150/152) tied Rarotonga cds x 2 28MR53 (type A9). **2**
185. Cook Is p/c to Calif 1/- (SG169) tied Rarotonga 11JE64 (type A9), plus cover to London 7d on 8d a/m o/p (SG186) 11FE67. 2 ite **3**
186. 1968 Olympics set of 6 (SG277/282) on regd fdc tied new Rorotonga cds (type A25) 21OC68. Rubber regd h/s in violet, no in black, (type AR17) **2**
187. 1971 30c + 20c surcharge (SG343) to pay private mail service via Holland during GB Postal Strike on cover to UK tied Rarotonga cds (type A25) 25FE71. With Boxed “Surcharge” 3 line cachet & “Sent via P.O.Box 3459” 3 line cachet both in black. (types AC14 & AC15) **5**
188. O.H.M.S A/m p/c used by PBureau to London 15c (SG239b) tied Rarotonga (type A25) 4JL68. **2**
189. 3 covers to UK, var adhesives, showing use of Rarotonga cds (type A25) with arcs (7NO77) & without arcs 13OC71 & 26JA72. **3**
190. O.H.M.S to Uk with Cap Cook \$2 (SGO29) tied d/ring Rarotonga cds 2FE79 (type A32). With fine d/ring The Secretary to the Cabinet h/s in violet (with initials). **3**
191. 4 covers incl 1 regd (1967-78) all with circ Official Rarotonga paid h/s (3 in red; 1 in violet) **2**
192. 3 O.H.M.S covers with fine diff official franks:- 1967 internal to Mauke with Treasury Rorotonga 9Nov1967 (signed); 1969 to Auckland with Freezer Office, Rarotonga 29Aug1969 (signed); internal 1971 with rect Customs Office 22Feb 1971 in red. **4**
193. 5 sm env 3 with Postage Paid h/s (Permit 1; 2 & 3) all c MR1972; OHMS with red P.O.S.B d/s 28Jun1971; window env with fine rect Post & Telecom Rarotonga d/s 18Mar1981. **6**
194. Pict cover to UK at 35c a/m rate (SG472; 526; 528) tied Rarotonga 17DE76 (type A25 no arcs). With fine rect Office of the Premier 16Dec1976 cachet in violet. Plus photo of the Premier and Administration Building Avarua. Plus a/m cover with Premiers Department rect cachet 10Jul1978. **3**
195. OHMS a/m cover to UK with 5c on 2½c (SGO5) & 30c on 15c (SGO10) tied Rarotonga cds (type A25 without arcs) 3MR77 with fine Office of the Premier rect cachet in violet 2Mar1977. (SG does NOT quote these OHMS o/ps mint or used stating that they were only issued cancelled to order – genuine postal use must therefore be scarce!) **4**
196. 7 covers, 2 showing use of Kia Orana slogan with Avarua dater c1980; plus 2 covers showing Rarotonga 2 ring d/s (type A32) from 1978/9, one with added Penrhyn Northern Cook Islands cds 15MR79. Plus later use with 3 covers, 2 with inverted dater portion, plus unstamped example to Uk with letter from National Bank of NZ explaining use etc. **3**
197. 1972 Apollo Moon Exploration M/s o/p Hurricane Relief & surcharged + 3c (each stamp) (SGMS400) plus 2 sm photos showing Hurricane damage. **2**

198. Apollo 12 & 13. Sm cover to NZ 10c Capt Cook (SG307) tied by 4 line Apollo 12 Cook Islands Splashdown 24 November 1969 d/s (type AC3); OHMS with 15c tied Rarotonga 17AP70 cds with Apollo 13 rec 4 line cachet (type AC4). **4**
199. 4c on locally addressed cover to "Dashwood Mauke" tied Rarotonga (type A25) 17AP70 with 4 line rect dual language Apollo 13 cachet in black (type AC4). With photo of Dashwood stately home & brief details of Julian Dashwood (aristocratic "black sheep"). **4**
200. Apollo 14 & 15. Second class Air Mail covers:- 10c Cook + 5c (SG234;307) Rarotonga 9FE71 with 5 line Apollo 14 South Pacific Splashdown cachet 9 February 1971 (type AC5); 2c; 5c; 8c (SG229;234;236) Rarotonga 8AU71 with circ Apollo 15 Safe Return pict cachet dated 13 July 1971 (type AC6). **4**
201. Apollo 17. Sm cover to NZ Moon Exploration 10c pair (SG385/6) tied Rarotonga 19DE72 plus Apollo 17 Splashdown pict cachet. Also with photo of future Premier Dr Tom Davis who worked on the Mercury & Apollo programs during his time in the USA. **4**
202. 20th Anniv of Moon Landing. Set of 8 (SG1213/1220) on regd pict fdc to UK tied Rarotonga 2 ring cds 14JL89, Regd h/s in black (sim to AR23). Plus u/m \$4.20 M/s1221. Plus Aitutaki set of 3 on pict fdc (SG602/4) to Uk tied Aitutaki 2 ring fd canc 28JL89; plus Penrhyn set of 5 (SG435/9) tied 2 ring Penrhyn fd canc 24JL89. Postally used to UK. 4 items. **10**
203. Conservation & Wildlife Day 1977. Large a/m regd env to Uk with \$1 (SG583) plus desc label tied by Rarotonga "Bird" fd cancel 15NOV1977 (type A28). Cover signed by Gordon Sawtrell after whom the bird depicted on the \$5 coin was named. Also u/m stamp (SG583) & photo of Gordon Sawtrell receiving a presentation from the Premier. **10**
204. Rarotongan Hotel. NZ Aerogramme specially printed with native motif for use by Rarotongan Hotel used to Uk, with hotel meter markings. Plus sm cover to NZ with 2 fine strikes of Y1702 Meter used at the hotel with Rarotonga d/s 3MY78. **4**
205. Internal letter Avarua to P.W.D Arorangi 8c rate. Returned to Sender with "Finger" RTS h/s and s/line Unknown. Dated 8Apr1981. **3**
206. Titikaveka P.O. A/m cover to UK 30c & 20c tied Titikaveka s/ring cds dated 3OC80, but with m/s notation for Official Opening 30 January 1981. With photo showing gathering attending the opening. Plus phot of interior of the P.O and later cover dated 19JN81 showing use of alternative canceller kept at Main PO Avarua (with note re identification). **10**
207. Titikaveka P.O. Sm regd cover to NZ with var adhesives 30c;35c;50c tied Titikaveka cds 3OC80 but altered in m/s to show correct date 30.1.81 (x 2). With Rarotonga regd label altered in m/s to read Titikaveka. Plus cover to NZ at 30c rate canc Titikaveka 3OC80 but not amended. Plus photo of the Post Office. **10**
208. Royalty. 1971 Visit of H.R.H Duke of Edinburgh u/m set of 5 (SG345/349), plus picture from local paper; 1973 20th Anniv of Coronation 10c + 50c M/s (SG429 & Ms430); 1977 25th Anniv of Accession set of 6 on commem Silver Jubilee cover (SG564/569) tied Rarotonga commem postmark 7Feb77 (type A27); 1980 Queen Mother 80th Birthday 50c (SG701) in complete u/m sheet of 9. **10**
209. 1989 Endangered Birds of Cook Is. Fdc set of 4 (SG1222/1225) tied Rarotonga fdc 4OC89 addr to UK; + Set of 4 in sm M/s format with diff values (Ms1226) on 2 fdc with 5DE80 rel date. 3 covers **10**

Aitutaki

210. 1937 Coronation set (SG124/6) on sm regd f.d cover to Uk tied Aitutaki cds 1JE37 (type L3). NZ type regd label (type AR6) with Aitutaki cds 1JE37. UK arr b/s 6SE37. **4**
211. Regd cover to UK with 5d & 1/6d o/p on 5d (SG154; 162) tied fine Aitutaki cds (type L4) 1AP60. NZ regd label (type AR10b) with fine cds same date (note this date is 2 years earlier than recorded by Burge in PISC supplement). Rarotonga transit b/s 4AP60. **5**
212. Regd cover to NZ 1966 SP Games 1d; 2/3d (SG200; 204) tied fine Aitutaki cds (type L5) 30NO67 x 3. NZ regd label (type AR11) with Aitutaki cds. **3**
213. 3 misc covers with diff cds. A) Local OHMS to Premiers Dept with Aitutaki cds (type L5) 6JA66; b) 5c with fine Aitutaki cds 12OC71 (type L7b); c) local 1c;6c tied d/ring Aitutaki 1AU78 (type L11) **3**
214. 3 longer type OHMS covers to Uk from Aitutaki Post Office (cachet) with fine range of lightly cancelled Bird definitives 12c to \$2 (alone Cat at £8) c 1988/9. (SG No 343;350;479;484; 518; O26; O27). **3**

Atiu

215. Sm neat cover to NZ with 1d (Cook) (SG100 prob) tied by fine Atiu cds (type C2 – gap between day & year) OC28 35. **4**
216. Sm clean cover to Aust 6d (SG155) tied by fine Atiu cds (type C2 – dateline changed) 15FE60 – very late use for this cds. **4**
217. 1946 Peace set (SG146/9) on sm clean regd cover to UK tied large Atiu cds (type C3) 4JE46 (f.d issue). NZ type regd label (type AR6) with Atiu d/s. **4**
218. OHMS. Local covers to Premiers Dept Rarotonga:- a) unstamped with Resident Agents Office Atiu 16Feb1966 cachet (type CF3a), b) 2c & 5c adhesives tied Atiu cds (type C4) 15FE79 with diff Resident Agents Office cachet (type CF5) fine. 2 items **4**
219. 2c/4c on sm cover to UK tied Atiu cds 26OC71 (type C4) with accompanying letter from Gordon Sawtrell (Resident Agent), plus local cover 7c tied d/ring cds 27JL78 (type (C6)) **4**

Mangaia.

220. Makea 1d (SG26) on sm piece with fine complete Mangaia N.Z cds (type B2) 14DE14 **4**
221. 1946 Peace set (SG146/9) on sm regd cover to UK tied Mangaia N.Z cds 4JE46 (type B5) x 2 fine. With NZ regd label (type AR6) with Mangaia cds same date. Rarotonga b/s 29JL46. **8**
222. Sm colourful cover to Hawaii ½d x 6; 3d (SG150; 153) tied Mangaia cds (type B6) x 5 10SP62 **4**
223. Sm cover to NZ 2d;8d (SG152;156) tied by unusual Mangaia s/ring cds (type B7 with day at base) (temp 2 month use whilst current cds sent to Rarotonga for repair) 24AP63 . **10**
224. Cook Bicent Expedition. 2c on 2d o/p x 2 (SG206) on cover to NZ tied Mangaia cds (type B6) 25SP69. Rect 7 line cachet in red (type AC2) & Endeavour Antarctic Supply pict cachet in blue. **8**
225. 3 misc covers a) sm OHMS to Justice Dept Rarotonga with rect Resident Agents Office Mangaia h/s 16APR (yr unclear); b) 5c to Uk tied fine Mangaia cds 22NO71 (type B8); local cover 7c tied d/ring Mangaia 27JL(71) (yr split . in between) (type B10). **6**

Manihiki.

226. Sm regd cover to UK Cook 1d; 2d x 2 (SG107/8) tied Manihiki NZ cds (type F2) 18MY40 x 2 plus extra full strike for registration. Auckland regd label applied in transit. Auckland b/s 5JL40. **10**
227. Sm regd cover to UK. 6d (SG111); ½d; 3d; 1/- (SG150;153;157) tied Manihiki cds (type F3) 17NO49 x 4 fine. NZ type regd label (type AR6a) with fine Manihiki cds 23SP49 (note diff date, but tied to cover!). Macclesfield UK arr b/s 29DE49. **10**
228. Sm regd cover to UK 6d x 2; 8d (damaged); 1/- (SG155/7) tied Manihiki cds (smaller type F4) 17JA62. With NZ type regd label (type AR10b) with full Manihiki cds 26JA62. **10**
229. 4 misc covers a) 9c;25c;30c to UK tied Manihiki cds (type F5 weak) 5AP77; b) 2c + 2c;3c Penrhyn tied Manihiki (type F5) x 2 13DE77 to UK; c) 0 regd to UK 25c tied Manihiki cds (type F5) 13DE77, with Rorotonga regd label (type AR18); d) local cover 1c;5c tied d/ring Manihiki cds (type F6) 24MR79 x 2 (cover shows signs of water damage at edge). **6**

Manuae.

230. Solar Eclipse 1966. 6d (SG174) on sm pict cover tied by s/ring Solar Eclipse Manuae cds 31-5-65 (fixed date) type K3b. **2**
231. Solar Eclipse 1966. 6d x 4 (SG174) on sm pict cover tied by s/ring Solar Eclipse Manuae cds 31-5-65 (fixed date) type K3b., with sep strike alongside **4**
232. Local cover to Chief Judge, Rarotonga with 6d Solar Eclips tied by v fine Manuae cds (type K2) 14SP65. **4**
233. 6c;9c;10c;25c;30c (SG235A;237/8A;241B;242A) on regd cover to Switzerland tied Manuae cds (type K2) 19JA68 x 3 (fine). With Rarotonga regd label (type AR12). Note SG states 25c (SG241B) not issued until 9.2.70 therefore an interesting catalogue query? **6**
234. 3c(4d) x 2 (SG223) on sm cover to UK tied Manuae cds (type K2) 3JN 7.2 (incorrect setting of dateline). With orig handwritten letter from NZ foreman in charge of 16 “boys” gathering copra. Letter is dated 20 July! **6**
235. 2 covers addr to Manuae returned to sender in UK as P.O now closed, March & August 1984, one with Rarotonga d/s 29AU84 & m/s “Opened by Chief Postmaster Rarotonga (signed)” on rev. **8**

Mauke.

236. 1946 Peace set (SG146/9) on sm regd cover to UK tied Mauke 2 ring cds (type D1) x 4 26AP47 (good). With NZ type regd label (type AR6a) with full strike of Mauke cds, same date. **7**
237. 1d x 3 (SG151) on sm clean cover to UK tied large Mauke cds (type D2) 10NO51 x 2 (fine). **4**
238. 30c + 20c O/p for 1971 Postal Strike (SG343) on sm cover to UK tied Mauke cds (type D3 – no arcs) 11MR71 (last day of use in Cook Is – o/p withdrawn on 12 March – strike had ended on 8 March). **6**
239. Use of P.O Savings Bank h/s. 2c x 2 on sm cover to UK tied indistinct 2 ring Mauke cancel (type D4), with fine complete strike below 21OCT1971 in violet. **6**
240. 2 misc covers. a) OHMS local to Rarotonga with Mauke (type D2) 16SP55 in worn condition but good; b) local cover 7c rate tied d/ring Mauke cds 2AU78 (type D5) fine. **3**

Mitiaro.

241. Sm regd cover to UK 5d;6d;1/- (SG154/155/157) tied Mitiaro cds 13NO66 (type E6) x 3. With Rarotonga regd label (similar to type AR14 but with printed name in black). M/s number overlapping regd label. Rarotonga transit b/s 15NO66. **10**
242. 3 misc covers. a) ½c;1c;15c to Switzerland tied Mitiaro cds (type E7 - no arcs) 30AU74 x 2 fine; b) 5c;10c;20c on sm cover to UK tied Mitiaro cds x 2 18JA77 (in blue black, overinked and some smudging); c) local cover 7c tied Mitiari 2 ring (type E8) 27JY78. **6**

Nassau

243. F Day Opening of P.O. 1c;4c (SG297;299) on cover tied fine Nassau cds (type NH1) 25JL69. **6**
244. 2misc covers. 15c (Penrhyn SG48B);20c (SG240B) on sm cover to NZ tied Nassau cds (type NH1) 28OC74 x 2 fine; 7c local cover tied d/ring Nassau cds (type HN2) 26AU78. **5**

Palmerston.

245. Sm cover to NZ. No stamps available at Palmerston – straight line dater for 22NOV1965 applied (with m/s note from A R Burge). Cancelled in transit Rarotonga 8DE65. Scarce. **8**
246. First Day Opening of Palmerston P.O. 5c on cover to Uk tied Palmerston cds (type A25 no arcs) 21JL69. M/s note “First Day of P.O”. **5**
247. A/m to Switz. 1969 SP Conf 5c; 30c (SG306;309) fine Palmerston cds (type A25) 12FE70. **5**
248. Local cover 2c;5c Churchill tied Palmerston cds (type A25) 2JL77 (fine). 5c stamp tied by rect Palmerston Island Radio 2Jul1977 in violet. **5**
249. 2 covers. 60c to Uk tied old (type A25) cds 17SP81 (showing wear), with fine large rect pict cachet for N.Z.O.I 1981 Cook Islands Expedition cachet in black (too late for inclusion in 1981 supplement). Plus sm cover to NZ 2 x 10c tied Palmerston d/ring cds 8JA80 (type J4) x 2. **8**

Penrhyn.

250. 37 Coronation set (SG124/6) on sm regd cover to UK tied 3 ring Penrhyn Island NZ cds 31JL37 x 3 (type M2 good/fine). NZ regd label (type AR6 with initials) fine strike of M2 postmark same date. **20**
251. 2c; 5c x 2; 10c (SG229A;234A;238A) on sm regd cover to Uk tied Penrhyn (type M4) cds 14AU69 x 2 fine. Blank regd label with “Penrhyn” in m/s (type AR21) tied fine complete strike of M4 cds **4**
252. 4 misc covers. 5c on sm cover to UK tied fine Penrhyn cds 1FE72 (type M6); Local OHMS to Justice Dept Rarotonga with fine Penrhyn cds 27OC65 (type M4); OHMS to Rarotonga with 2 ring Penrhyn Northern Cook Islands cds (fdi) 8AU78 (type M9); A/m to Uk with Official Post Office Paid cachet in violet (type MF2 –fine) & s/ring cds (type M10) 24SP84. **8**

Pukapuka (Danger Island).

253. Sm clean regd cover to UK 1946 Peace set (SG146/9) tied Danger Island cds (type H3) x 2 1AU46. With NZ type regd label (type AR6) with fine cds same date. Apia transit 30OC46. **10**
254. 1949-61 defin set of 10 (SG150/159) (cat £55 used) on regd a/m cover to uk tied Pukapuka Island cds 27JL59 x 3 (type H4). NZ regd label (type AR6) but with later 3SP59 cds. Suva registered b/s 22SP59 (so later date on regd label is almost certainly correct). **20**
255. Sm clean regd cover to UK 5d; 1/6d o/p om 5d (SG154;160) tied fine Pukapuka Island cds 21MY60 (type H4). Nz regd label (type AR10b – but 2 years earlier than recorded by Burge) with part cds. Suva transit b/s 11JE60. **7**

256. 5c cover to Uk with fine Pukapuka cds 10JL72 (type A25a square letters w/o arcs) with orig handwritten letter from Postmaster. **4**
257. Bi-cent of Cook Discovery \$2.50; \$7.50 (SG492/3 – cat £20 used). 2 sm covers to Switzerland a) \$2.50 (possibly regd) tied Pukapuka cds (type A25a – no arcs) 19AU76. b) \$7.50 to same address & same date, with Rorotonga regd label (type AR18). **6**
258. 3 misc covers a) local cover 1c;5c tied fine Pukapuka (type A25a no arcs) 10Mr77; b) ½c x 2; 5c on sm cover tied Pukapuka cds x 2 (A25a in blue-black) 9JN77,+ fine rect Pukapuka Island Radio dated cachet 11Jul1977, c) ½c x2, 5co/p on 1½c local cover tied Pukapuka 2 ring cds (type H6) x 3 3AP79. 3 items. **6**

Rakahanga.

259. Sm clean regd cover to UK 1946 Peace set (SG146/9) tied Rakahanga cds 12JE46 (type G2) x 3 fine. Croosed for registration but no markings applied. Rarotonga b/s 20JE46. **5**
260. 2 Covers a) 2d;5d a/m to NZ tied Rakahanga cds 16JA65 x 2 (type G2); b) OHMS local cover to Premiers Office dated 24SP65 (type G2). **4**
261. Commonwealth Reply Coupon. Sm clean cover to UK partially paid for by Commonwealth Reply Coupon 4d issued at Harrow 16AU71 with Rakahanga despatch date 19JA72 affixed to reverse. Balance of postage ½c tied Rakahanga cds 19JA72 (type G3). A rare example of the proper use of Commonwealth Reply Coupon on mail from Pacific Islands. **20**
262. 2 covers. a) 1c; 2c + 8c o/p Penrhyn Northern (Cook Islands) (SG47B) to NZ not tied but with fine Rakahanga cds 15JL77 (type A25 w/o arcs) M/s note states “date should be 15JL74.7”. b) 7c local cover tied Rakahanga Northern Cook Islands cds 14AU78 x 2 fine (type G4) **4**

Suwarrow.

263. Sm clean cover to UK 5c tied fine Suwarrow cds (type I4) 10MY70. With d/ring “Tom Neale; Suwarrow; Cook Islands h/s in black (type I3) **5**
264. Local cover to Rarotonga 1c;5c tied good Suwarrow cds 10JN76 (type I4). Rarotonga arrival b/s 26JL76 (46 days in transit). **5**
265. 2 covers to UK a) 1c;2c;5c Coinage (SG417/9) tied good Suwarrow cds (type I4) 7JN75; b) 5c;10c (SG526/7) tied 2 strikes Suwarrow cds 12FE77 (type I4 –oily but good), with Tom Neale d/ring h.s on reverse & signature of Tom Neale (he died later that year) with cutting relating to his death. **8**

Postal Stationery.

266. Cook Islands Federation. One Penny larger size (127 x 154mm) postcard, blue on white card. Design as stamp (SG1) but in blue. Issued April 1892. Unused, with sm tear lower right side. V clean. **15**
267. Makea design. One Penny dark blue on Buff Card, (stamp as SG6). Unused in excellent condition size 125 x 80mm. Issued August 1894. **15**
268. Makea design. One Penny dark blue on Buff Card, (stamp as SG6). Unused (but stamp cancelled with d/ring Rarotonga cds 5OC02 – type A6) in excellent condition size 125 x 80mm. **15**
269. Makea design. One Penny dark blue on Buff Card, (stamp as SG6), with added Makea 1d; 1½d (SG6/7) tied by 2 ring Rarotonga cds (type A6) 1MY96 (1896) x 3. Addr to Prague, Bohmen with Auckland transit 13MY96 and Prag arrival 19.6.96. Written & signed by J.H.Garnier P.M.General. An exhibition item. **70**

Air Mail Items.

270. Dec 1934 Inauguration of A/m service to Australia. 1/3d rate Glasgow addressed to Rarotonga, Cook Islands dated 7DE34, Sydney transit 21DE34; arrival Rarotonga 28JA35 (type A7) on front. Readdressed to GPO Christchurch with Christchurch Delivery Counter b/s 5FE35. **25**
271. 1938 All-Up Service at 1½d rate. Phillips cover with Newport Mon 23Jul 1938 m/c canc, Stage 3 pictorial cachet in black. Rarotonga b/s 25AU38. **6**
272. 1938 All-Up cover at 1½d rate with London slogan canc 27July 1938. Typed inscription. Rarotonga 19SP38 b/s. With rect “Posted at *Hove* under cover to Head Postmaster King Edward St, London EC1” cachet in violet on reverse. **6**
273. **Solomon Islands.** Barakoma Airfield. 3d; 5d on Aerogramme to Rev Trevor Shepherd in NZ, tied by Barakoma airfield s/line h/s & s/line date 2JUL1957 x 2. Typed inscription “Last Day canc of “Barakoma Airfield” rubber stamp.” Omata NZ arr d/s 8JL57. With typed message inside giving details **12**

274. 1973 "Inaugural Jet Service Rarotonga – Auckland December 1st 1973" rect cachet in blue on larger cover addr to UK. Rarotonga Official Paid in red, with Rarotongs cds 1DE73 (type A25a). Plus Postally used p/c showing ANZ DC-8 from Cook Islands (pmk unclear but p/c date 3.2.75) and smaller photo of DC8 taking off from Rarotonga. This flight commemorates the opening of the new international airport and predates the official ANZ first flight by 3 days. **6**
275. 2 covers First Jet Flight by ANZ on Coral Route 4 December 1973. a) Sm pict cover Rarotonga to Papeete 10c tied Rarotonga cds (type A25a) 4DE73, Papeete arrival 4-12-1973, b) longer a/m cover addr to UK 30c tied Rarotonga 4DE73 but with box rect 4 line cachet "Carried on/Inaugural 5 Star/ Coral Route Jet Service/4 December 1973" in blue. **5**
276. Polynesian Airlines Experimental Flight Aitutaki to Rarotonga 4MR65, with Rarotonga arrival b/s same date. Rect "Experimental Air Mail, Aitutaki, Fr Polynesia; Rarotonga" cachet in black. Signed by pilot J.O.Washington. **5**
277. Polynesian Airlines Experimental Flight Rarotonga to Penrhyn 8MR65, with green cachet "Unable Land at Penrhyn Air Strip" & circ "Experimental Air Mail Rarotonga, Aitutaki French Polynesia" cachet in blue. Customs Office Aitutaki rec h/s 8Mar1965 on rev. Signed by pilot N.W.Bonner. **5**

Pacific Islands Maritime and Ship Mail.

278. M.V.Malakuna. Aust 8½d on sm cover to Mrs Voyce at Tanamal, North Buka tied oval "M.V.Malakula" cachet in red with voyage details "Skotolan to Tanamal 7.4.51" in m/s. This vessel purchased by Methodist Mission in Rabaul in 1950, based at Bougainville. **10**
279. M.V.Blue Lagoon, New Georgia. Solomons ½d; 1d x 2 on sm Voyce cover to Buin New Guinea tied Sohako (?) P.N.G 19NO57, with 2 line M.V.Blue Lagoon cachet in violet. M.V Blue Lagoon, vessel of 4 tons prev owned by L.C.Gill of Lambeti, New Georgia. **6**
280. A.V.Mandalay. Solomon Islands 2½d tied Gizo cds 26Jun51 to Rev Silvester, Vella Lavella. With oval A.V.Mandalay cachet in black with voyage details in m/s "Bilua,Gizo to Paramata 22/6/51". A.V.Mandalay 41ft ketch bought by Methodist Mission in 1948 for work in Solomon Islands. **8**
281. A.V.Daphne. OAS envelope addressed to Miss J Voyce at Totokina. No postal markings, bit 3 line "Buka/A,V.Daphne/Bougainville" cachet in black. A.V.Daphne a vessel of 9 tons work-horse of Methodist Mission on Rabaul/Honiara route bought immed after end of WWII. Broken up after hitting a reef in 1950 (so cover dates from 1946-50 period). **10**
282. M.V.Munda. Solomon Islands ½d x 5 on a/m env to Rev Metcalfe at Munda, New Georgia, stamps tied by s/line Munda h/s in violet x 4. M/s "per Launch, "Munda". No other postal markings. M.V.Munda sm mail launch operating between Munda & Barakoma Airfield 1953-8. Sold to Chinese co in mid 1960's. **8**
283. A.V.Cicely II. Solomon Islands 2½d tied Gizo cds 26Jun51 addr to Rev Silvester Vella Lavella. With oval A.V.Cicely oval h/s in green with voyage details in m/s "Java to Bilua 20/6/51". A.V.Cicely II presented by John Astley of Auckland to Methodist Mission. **8**
284. A.K.Roviana. Aust 3½d tied Rabaul cds 23Feb52 on Bank of NSW env addr to Rev Voyce, Buin. With oval A.K.Roviana cachet in black, voyage details in m/s "Kangu to Kihili 3/3/52". Named after Head Mission on Munda, owned by S.Seas Evengelical Mission & taken over by Australian Navy during WWII, later purchased by Methodist Mission. **8**
285. M.V.Nusa Zona. Solomon Islands 3c; 4c on Wells cover to UK tied Munda cds 1Jun72. With oval United Ships Postal Agency h/s in violet same date. 3 line rect M.V."Nusa Zona"/Solomon Islands cachet in violet. Built in Brisbane for Methodist Mission. **3**
286. M.V Ozama Twomey. PNG 7d o/p on pict cover tied Buin PNG cds 19AU59 addr to Mrs Voyce in NZ. With 2 ring circ "Ozama Twomey Posted on Board" cachet in violet. M.V.Ozama Twomey built Auckland 1958 & presented by NZ Lepers Trust to Methodist Mission. **8**
287. M.V.Ozama Twomey. Solomon Islands 1c; 3c;4c on Wells cover to UK tied Munda cds 1Jun72 cds. With United Ships Postal Agency h/s in violet same date (note first day of use). Also octagonal "M.V. Ozama Twomey Posted on Board" 6 line cachet in violet. **3**
288. M.V.Toa Moana. NZ4c x 2 on cover to UK tied Cook Is "hatched oval" dumb cancel with Rarotonga cds 5FE75 alongside. Also large S/line "Packet Boat" h/s in black. Plus circ 2 ring "M.V.Toa Moana Master" h/s in violet (signed). **5**
289. M.V.Lorena. NZ 3c;6c on sm cover to UK tied Cook Islands "hatched oval" dumb cancel, with Rarotonga cds 24AP75 alongside. 3 line rect "M.V.Lorena 16APR1975" in violet. Plus large s/line Packet Boat h/s in black **5**

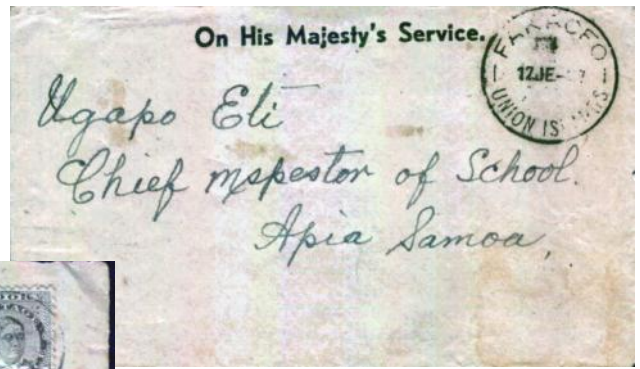
290. M.V.Manuwai. Cook Is 1c;5c tied Rarotonga cds 9NO78 x 2 addr to UK. Large s/line M.V.Manuwai h/s in red. Inter-island vessel owned by Messrs Silk & Boyd, Rarotonga. With sm photo of vessel. 6
291. M.V.Fetu Moana. Cook Is 50c tied Avarua slogan (type A35) 3Jul1981. Shipping Corp of NZ sticker. Also 2 ring circ M.V.Fetu Moana ship cachet in black (signed). Entered service earlier that year. 6
292. M.V.Tiare Moana. Cook Is 65c tied Avarua slogan (type A35) 22Jun 1981 to UK. With rec 3 line "Tiare Moana/22Jun 1981/Master" h/s in black. Entered service earlier that year. 6
293. M.V.Akatere. Cook Is 1d; 6d (solar Eclips) tied Manuae Solar Eclipse cds 31-5-65 (type K3a) addr to NZ. With large "M.V.Akatere" s/line cachet in violet. With fine coloured picture from local magazine showing vessel arriving at Mauke. 8
294. M.V.Mataroa. Cook Is 2c;5c tied Rarotonga cds 8NO78 x 2 on local cover. With large s/line "M.V.Mataroa" h/s in red. With photo of vessel in Avatiu Harbour taken from local paper. 8
295. M.T.Pacific Navigator. Cook Is 8c on local cover tied Rarotonga cds 22FE77. With boxed rect 6 line "M.T.Pacific Navigator" cachet in violet. This vessel is Mobil oil tanker from Fiji on three weekly service. With sm coloured photo of vessel in harbour. 8
296. H.M.Britannia, Royal Yacht. Cook Is 10c (SG429) tied Rarotonga cds 3FE77 on cover to NZ. With fine pict Visit of H.M.Yacht Britannia cachet in violet (type AC8) in violet. With large photo taken from local paper previewing visit. 10
297. S.S.Northern Star. GB 5d tied Rarotonga cds 23AP71 with boxed Packet Boat alongside. With 6 line rect S.S.Northern Star Southampton ship cachet in black. Plus fine p/c showing S.S.Northern Star. 6
298. U.S.S Robert E Peary. US 5c x 3 tied by U.S.Navy USS Robert E Peary canc Feb 7 1979. Circ embossed United States Ship marking. Plus s/line USS Robert E Peary h/s with fine picture of from of vessel in purple. With photo of vessel outside Avatiu Harbour. 8
299. Auckland Loose Letters. Sm piece with Makea 1 Penny x 2 with fine complete 24mm diam Auckland Loose Letters cds 2JE10 (1910). 6
300. Auckland Packet Boat. Cook Is Peace 1d x 2 on pict cover to NZ tied fine large Auckland Packet Boat 35mm diam cds 29JE46 6
301. R.M.S Makura. Cook Is 1d (SG107?) on sm cover to N.York tied circ Marine Post Office, R.M.S Makura 25FE33. Fine early cover roughly opened at top. Commercial. 15
302. R.M.S Maunganui. Cook Is 2½d (SG109) on sm cover to Paris, Stamp tied by square dumb cancel, with circ Marine Post Office R.M.S Maunganui 21DE35 (fune) alongside. Paris arrival 22.1.36. Envelope torn lower left but neatly repaired. With fine unused v early postcard of S.S.Maunganui. 20
303. M.V.Matua. Cook Is 1d (SG107?) on sm cover to NZ tied Suva cds 14FE39 with fine complete strike alongside. Boxed Suva "Paquebot" h/s in black. Typed inscription "Per M.V.Matua". With Cook Is 3/- stamp (SG159) u/m showing this vessel in the design. 15
304. Union Steamship Co of N.Z. Cook Is 1d ((SG107?) tied Rarotonga cds 27AP36 on official Union Steam Ship Company printed envelope. From Branch Manage (h/s in violet). Addr to Apia Samoa with m/s date added & Rarortonga s/line h/s. 6
305. M.V Maui Pomare. Cook Is 3d o/p on sm cover addr to Vermont USA tied by oval Official M.V.Maui Pomare 10Dec 1948 ship h/s in violet. Also tied on arrival in NZ by Auckland slogan 16DEC 1948 8
306. N.Z.G.M.V Maui Pomare. NZ 1d;2d Health issue on cover to Mrs Voyce in NZ tied Rarotonga cds 1OC60 fine. With 3 ring oval N.Z.G.M.V Maui Pomare Master h/s in violet (signed). 8
307. G.M.V Moana Roa. NZ 4c on sm cover to UK tied Cook Is "hatched oval" dumb cancel with Rarotonga cds 30SE69 & Boxed Packet Boat h/s alongside. 6 line G.M.V Moana Roa ship cachet in violet. 5
308. M.V.Moana Roa. **Consignee Mail**. Longer type env inwards to Rarotonga from NZ. NZ meter (U.654) tied by Cook Island "hatched oval" dumb h/s with Rarotonga cds 24No70 & boxed Packet Boat alongside. Single s/line M.V Moana Roa h/s in violet. Clearly commercial. 5
309. M.V.Moana Roa. **Consignee Mail**. Longer "window" env with NZ 7c meter (U701) with Rarotonga cds 24NO70 & boxed Packet Boat h/s alongside. M/s notation "Consignees Mail. Per M.V "Moana Roa" 17/11/70 to Rarotonga" Single s/line M.V.Moana Roa h/s in violet. Clearly commercial. 5
310. G.M.V Moana Roa. Lastvoyage. NZ 5c on sm cover to NZ tied Cook Is "hatched oval" with Rarotonga 9AU74 & boxed Packet Boat. 6 line G.M.V Moana Roa ship cachet & boxed rect "Moana Roa" dated cachet 8AUG1974, both in violet. 5
311. Kallisto (**Russian** Research Vessel). USSR stamps on sm cover addr to Rarotonga tied Cook Is hatched oval dumb cancel x 2. Rarotonga cds 9FE77 & boxed Packet Boat alongside. Both stamps also tied by circ Russian cachet with ships name in violet. 10

312. M.V. Union South Pacific. Cook Is 2½c x 2 on Wells cover to UK tied boxed Suva Paquebot h/s in black (poor). With Fiji 4c added, tied Suva cds 24JA74. 6 line boxed M.V Union South Pacific ship cachet & Union South Pacific Master h/s (Signed) both in blue. **4**
313. S.S. Waitemata. Cook Is 1d;3d on sm cover to USA tied Rarotonga cds 9FE54 (fine). With boxed rect Packet Boat h/s in green & fine oval S.S. Waitemata Pursers Office 9Feb 1954 in black. **8**
314. S.S. Wairuna. Aust 3½d on sm cover to USA tied Rarotonga cds 9OC56. Boxed Packet Boat in blue-black. Oval Pursers Office S.S. Wairuna 7OCT1956 & 5 line S.S. Wairuna ship cachet in violet. **8**
315. John Williams VI. Cook Is 2d x 2 (SG152) on sm local cover to Resident Commissioner Manihiki tied fine Manihiki cds 5AU50. Circ “John Williams VI Posted on Board” cachet in Red. Typed inscription “L.M.S Centenary. Rakahanga – Manahiki”. Plus original note praising design of the stamp. **12**
316. S.S. Monterey. US 3c;4c x 2 on sm cover to Australia, all tied Cook Is “Hatched Oval” dumb h/s with Rarotonga cds 24MY67 & boxed Packet Boat alongside. With Mailed at sea Aboard S.S. Monterey” & Posted at Sea 3 line cachets in green. With fine unused postcard of S.S. Monterey. **6**
317. Coriolis (French Oceanographic Research Vessel). Cook Is 4c;6c on sm cover to UK tied Rarotonga cds 12AP77 x 2. Circ “Anchor” Coriolis Noumea ship h/s in black. +sm photo of vessel in Avatiu harbour **8**

Miscellaneous Items.

318. **Galapagos** Barrel Mail. Ecuador 1.30s on sm cover to UK tied circ Correos del Ecuador Floreana – Galapagos h/s with complete strike alongside. With “Parque National Galapagos (Giant Tortoise)” cachet in pink; Barrel Mail pict cachet & rec Post Office Galapagos (showing “barrel”) both in black. Plus 2 ring “Golden Cachelot” pict ship cachet. With fine large Galapagos Barrel Mail cachet on reverse. No date stamps but stamp issued April 1972. **20**
319. Cook Islands to Makogai, Fiji. Sm cover to patient at leper hospital Makogai. Cook Is 6d tied by indistinct Rarotonga (/) cds (probably 1960’s). Roughly opened. **10**
320. Fiji. 100 years anniv of death of Rev Baker. 3d tied by P.O. Vinidawa cds 21JL57 on pic env (unaddressed). With “Per Canoe & Packhorse from Nausori etc “ cachet in black. **5**
321. The Captain Cook Collection. Sm collection directed at his first voyage. Comprising 30 stamps (all mounted, incl Cook Is 1968 set of 8 – SG269/276) + Aust, NZ; Samoa & GB, 4 postcards (incl Dennis no 67 – Whitby; Statue & Resolution; Party from Resolution shooting Sea Horses (Nat Maritime Museum ENT37; Webber portrait 1776 from Nat Portrait Gallery with souvenir pmk 215th Anniv of Voyage , Whitby 9 March 1983 pmk; Medallion by Wedgewood on British Museum p/c. P.H items comprise GB QV ½d P/s card with fine Staithes duplex AU29 97; GB Cook 1/9d on unaddr pict Bi-Cent cover tied Whitby cds 11JU68; GB regd cover with Cook 1/9d etc on Bi-Cent envelope registered Staithes (pmk & regd label) 23FE73; Norfolk Is Bi Cent cover with 2 value set 23AP70; Australia Bi-Cent set in imperf M/s on larger pict regd f.d. cover Sydney f.d 20APR70; GB cover Whitby to Harrow with Whitby Bi-Cent pict slogan 10Dec1968; 250th Anniv of Birth GB pict cover with Marton Cleveland pict pmk 27October 1978; Unaddressed Arlington cover showing Wedgewood medallion also with Marton pmk; Australia Day 26Jan 1984 pict envelope with fd pmk showing Cooks Cootage on printed 30c stamp, & picture of interior. **12**

Lot 42



Lot 171



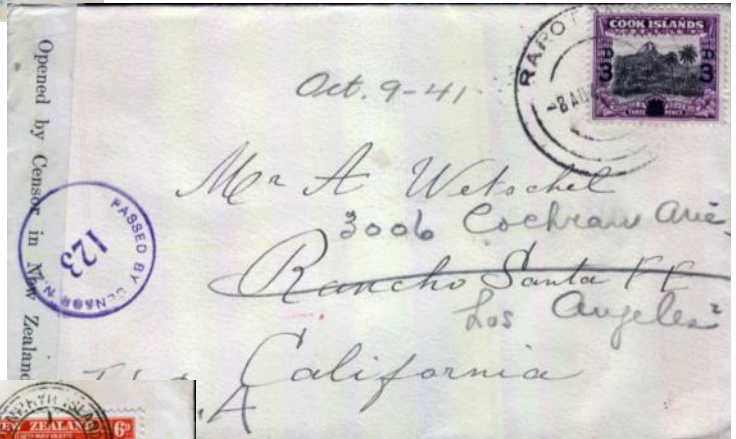
Lot 173



Lot 178



Lot 180



Lot 250



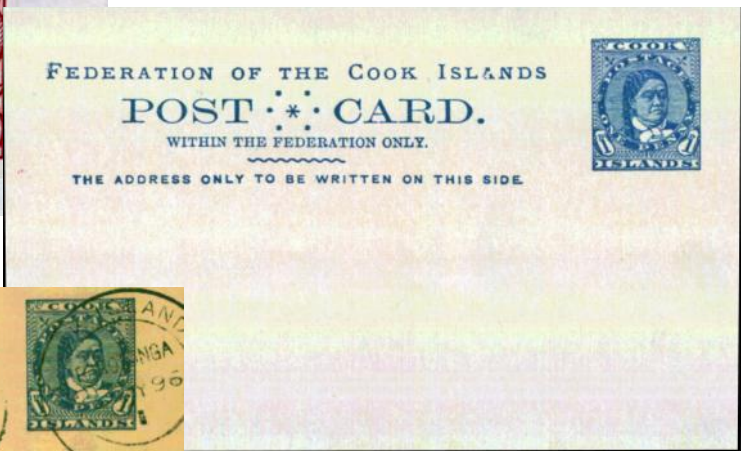
Lot 253



Lot 261



Lot 267



Lot 269



Lot 302



Lot 318

